

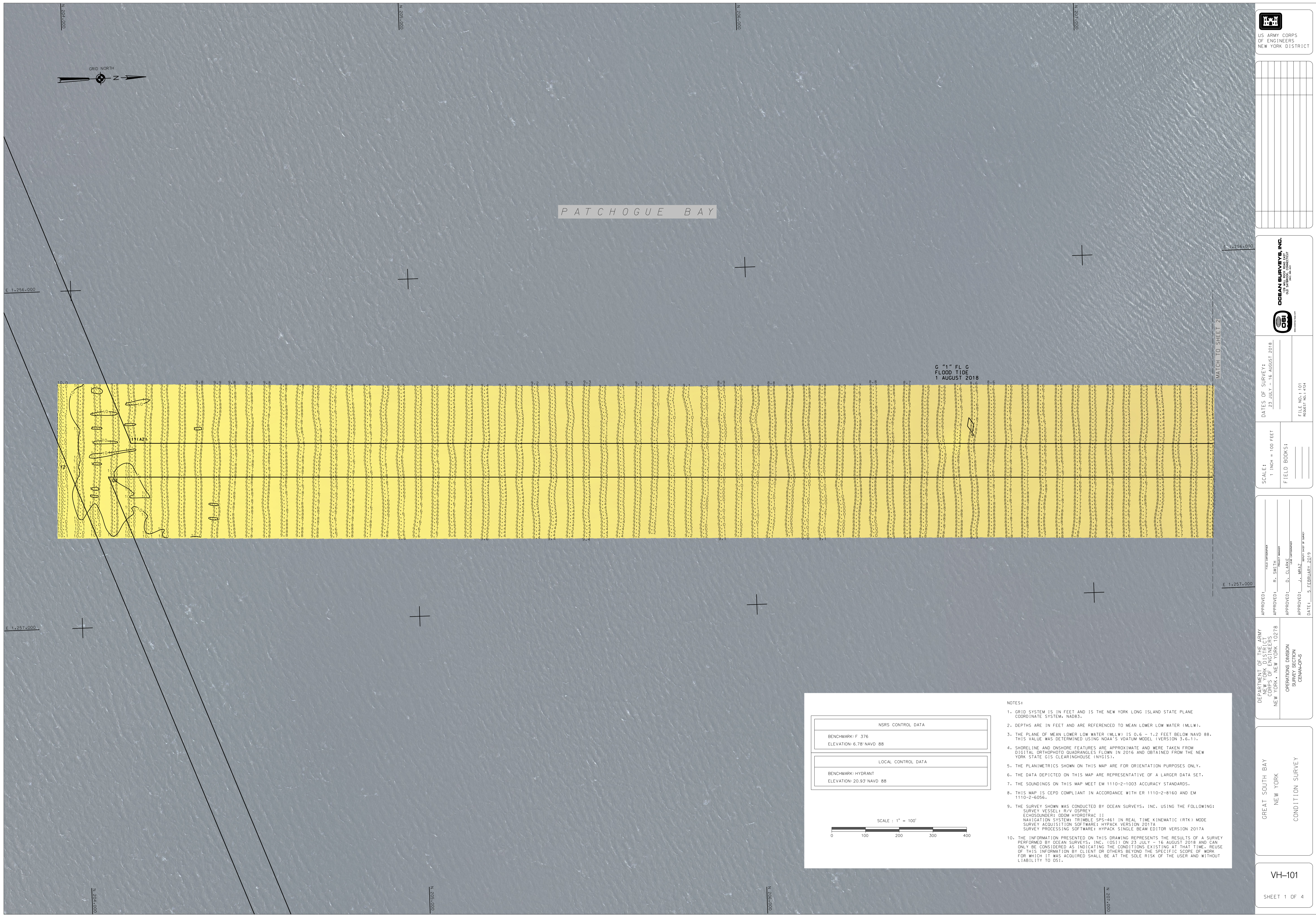
US ARMY CORPS OF ENGINEERS NEW YORK DISTRICT



PATCHOGUE BAY

G 4" FL C  
FLOOD TIDE  
1 AUGUST 2018

MATCH TO SHEET 2



NSRS CONTROL DATA BENCHMARK: F 376 ELEVATION: 6.78' NAVD 88	
LOCAL CONTROL DATA BENCHMARK: HYDRANT ELEVATION: 20.93' NAVD 88	

SCALE: 1" = 100'

NOTES:

- GRID SYSTEM IS IN FEET AND IS THE NEW YORK LONG ISLAND STATE PLANE COORDINATE SYSTEM, NAD83.
- DEPTHS ARE IN FEET AND ARE REFERENCED TO MEAN LOWER LOW WATER (MLLW).
- THE PLANE OF MEAN LOWER LOW WATER (MLLW) IS 0.6 - 1.2 FEET BELOW NAVD 88. THIS VALUE WAS DETERMINED USING NOAA'S VDUTUM MODEL (VERSION 3.6.1).
- SHORELINE AND ONSHORE FEATURES ARE APPROXIMATE AND WERE TAKEN FROM DIGITAL ORTHOPHOTO QUADRANGLES FLOWN IN 2016 AND OBTAINED FROM THE NEW YORK STATE GIS CLEARINGHOUSE (NYGIS).
- THE PLANIMETRICS SHOWN ON THIS MAP ARE FOR ORIENTATION PURPOSES ONLY.
- THE DATA DEPICTED ON THIS MAP ARE REPRESENTATIVE OF A LARGER DATA SET.
- THE SOUNDINGS ON THIS MAP MEET EM 1110-2-1003 ACCURACY STANDARDS.
- THIS MAP IS CEPD COMPLIANT IN ACCORDANCE WITH ER 1110-2-8160 AND EM 1110-2-6056.
- THE SURVEY SHOWN WAS CONDUCTED BY OCEAN SURVEYS, INC. USING THE FOLLOWING:  
 SURVEY VESSEL: R/V DSPREY  
 ECHOSOUNDER: ODOM HYDROTAC II  
 NAVIGATION SYSTEM: TRIMBLE SP5-461 IN REAL TIME KINEMATIC (RTK) MODE  
 SURVEY ACQUISITION SOFTWARE: HYPACK VERSION 2017A  
 SURVEY PROCESSING SOFTWARE: HYPACK SINGLE-BEAM EDITOR VERSION 2017A
- THE INFORMATION PRESENTED ON THIS DRAWING REPRESENTS THE RESULTS OF A SURVEY PERFORMED BY OCEAN SURVEYS, INC. (OSI) ON 23 JULY - 16 AUGUST 2018 AND CAN ONLY BE CONSIDERED AS INDICATING THE CONDITIONS EXISTING AT THAT TIME. REUSE OF THIS INFORMATION BY CLIENT OR OTHERS BEYOND THE SPECIFIC SCOPE OF WORK FOR WHICH IT WAS ACQUIRED SHALL BE AT THE SOLE RISK OF THE USER AND WITHOUT LIABILITY TO OSI.


**OCEAN SURVEYS, INC.**  
(A U.S. ARMY CORPS OF ENGINEERS CONTRACTOR)  
  
 400 EASTERN AVENUE  
 NEW YORK, NY 10002

DATE OF SURVEY: 23 JULY - 16 AUGUST 2018

SCALE: 1" = 100 FEET

FIELD BOOKS:

FILE NO.: 101  
 REQUEST NO.: 4724

DEPARTMENT OF THE ARMY  
 CORPS OF ENGINEERS  
 NEW YORK, NEW YORK 10278

OPERATIONS DIVISION  
 SURVEY SECTION  
 CEWANO-S

APPROVED: **R. SMITH**  
FIELD SUPERVISOR

APPROVED: **D. CLARKE**  
PROJECT MANAGER

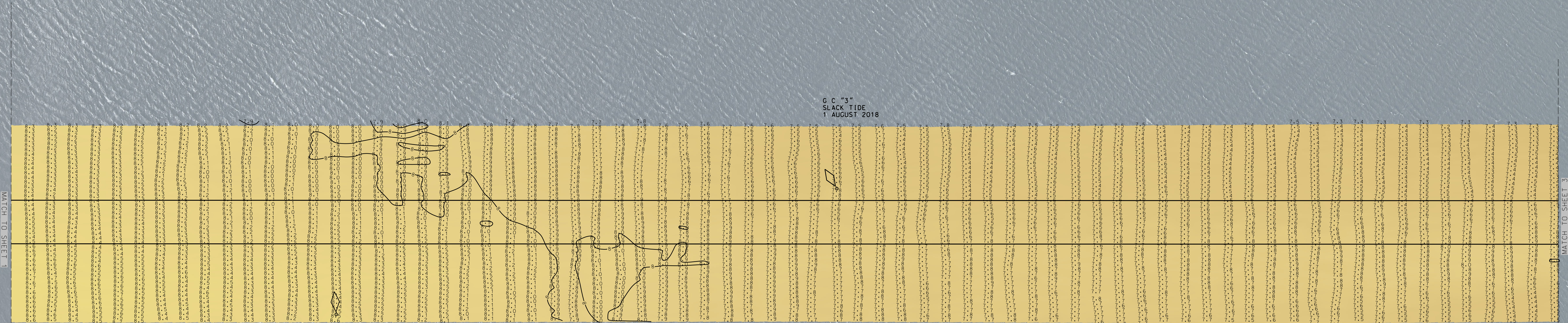
APPROVED: **J. MARZ**  
PROJECT CHIEF

DATE: 5 FEBRUARY 2019

GREAT SOUTH BAY  
 NEW YORK  
 CONDITION SURVEY

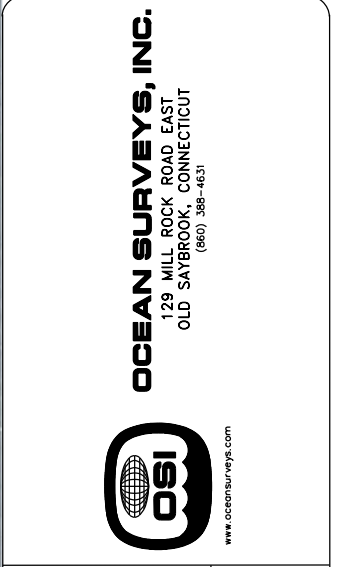
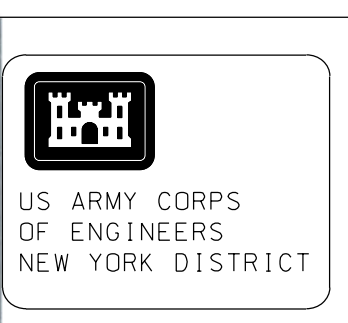


# PATCHOGUE BAY



MATCH TO SHEET 1

MATCH TO SHEET 3



DATE OF SURVEY:  
23 JULY - 16 AUGUST 2018

SCALE:  
1 INCH = 100 FEET

DEPARTMENT OF THE ARMY  
CORPS OF ENGINEERS  
NEW YORK, NEW YORK 10278

OPERATIONS DIVISION  
SURVEY SECTION  
CBAN-CP-S

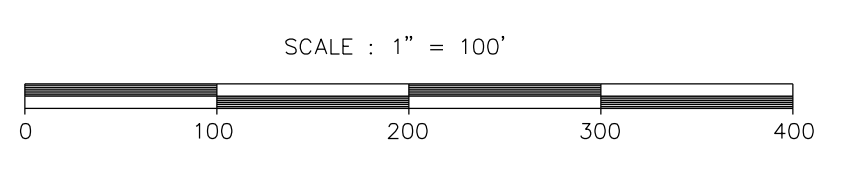
GREAT SOUTH BAY  
NEW YORK  
CONDITION SURVEY

VH-102  
SHEET 2 OF 4

FILE NO.: 101  
REQ NO.: 4724

NSRS CONTROL DATA	
BENCHMARK: F 376	ELEVATION: 6.78' NAVD 88

LOCAL CONTROL DATA	
BENCHMARK: HYDRANT	ELEVATION: 20.93' NAVD 88



- NOTES:
- GRID SYSTEM IS IN FEET AND IS THE NEW YORK LONG ISLAND STATE PLANE COORDINATE SYSTEM, NAD83.
  - DEPTHS ARE IN FEET AND ARE REFERENCED TO MEAN LOWER LOW WATER (MLLW).
  - THE PLANE OF MEAN LOWER LOW WATER (MLLW) IS 0.6 - 1.2 FEET BELOW NAVD 88. THIS VALUE WAS DETERMINED USING NOAA'S VDATUM MODEL (VERSION 3.6-1).
  - SHORELINE AND DOWNSHORE FEATURES ARE APPROXIMATE AND WERE TAKEN FROM DIGITAL ORTHOPHOTO QUADRANGLES FLOWN IN 2016 AND OBTAINED FROM THE NEW YORK STATE GIS CLEARINGHOUSE (NYGIS).
  - THE PLANIMETRICS SHOWN ON THIS MAP ARE FOR ORIENTATION PURPOSES ONLY.
  - THE DATA DEPICTED ON THIS MAP ARE REPRESENTATIVE OF A LARGER DATA SET.
  - THE SOUNDINGS ON THIS MAP MEET EM 1110-2-1003 ACCURACY STANDARDS.
  - THIS MAP IS CEPD COMPLIANT IN ACCORDANCE WITH ER 1110-2-8160 AND EM 1110-2-6056.
  - THE SURVEY SHOWN WAS CONDUCTED BY OCEAN SURVEYS, INC. USING THE FOLLOWING:  
SURVEY VESSEL: R/V OSPREY  
ECHOSOUNDER: ODOM HYDROTRAC II  
NAVIGATION SYSTEM: TRIMBLE SPS-461 IN REAL TIME KINEMATIC (RTK) MODE  
SURVEY ACQUISITION SOFTWARE: HYPACK VERSION 2017A  
SURVEY PROCESSING SOFTWARE: HYPACK SINGLE BEAM EDITOR VERSION 2017A
  - THE INFORMATION PRESENTED ON THIS DRAWING REPRESENTS THE RESULTS OF A SURVEY PERFORMED BY OCEAN SURVEYS, INC. (OSI) ON 23 JULY - 16 AUGUST 2018 AND CAN ONLY BE CONSIDERED AS INDICATING THE CONDITIONS EXISTING AT THAT TIME. REUSE OF THIS INFORMATION BY CLIENT OR OTHERS BEYOND THE SPECIFIC SCOPE OF WORK FOR WHICH IT WAS ACQUIRED SHALL BE AT THE SOLE RISK OF THE USER AND WITHOUT LIABILITY TO OSI.



US ARMY CORPS OF ENGINEERS NEW YORK DISTRICT


**OCEAN SURVEYS, INC.**  
AN EQUIMAX COMPANY  
100 EAST 20TH STREET  
NEW YORK, NY 10003  
TEL: 212-512-2019  
WWW.OCEANSURVEYS.COM

DATE OF SURVEY: 23 JULY - 16 AUGUST 2018  
SCALE: 1" = 100 FEET  
FIELD BOOKS:

FILE NO. 101  
REQ. NO. 4724

APPROVED: [Signature]  
FIELD SUPERVISOR  
APPROVED: R. SMITH  
PROJECT MANAGER  
APPROVED: D. CLARKE  
CORPORATE  
APPROVED: J. BEAZ  
QUALITY CONTROL  
DATE: 5 FEBRUARY 2019

DEPARTMENT OF THE ARMY  
CORPS OF ENGINEERS  
NEW YORK, NEW YORK 10278  
OPERATIONS DIVISION  
SURVEY SECTION  
CENAN-C-5

GREAT SOUTH BAY  
NEW YORK  
CONDITION SURVEY

VH-103  
SHEET 3 OF 4  
FILE NO: 101  
REQ NO: 4724



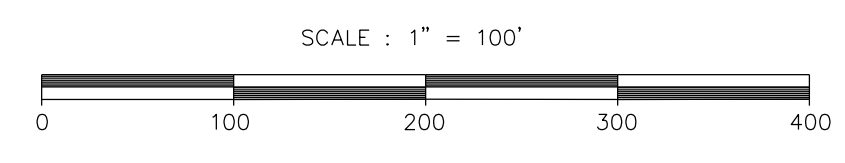
**R N "4"**  
SLACK TIDE  
31 JULY 2018

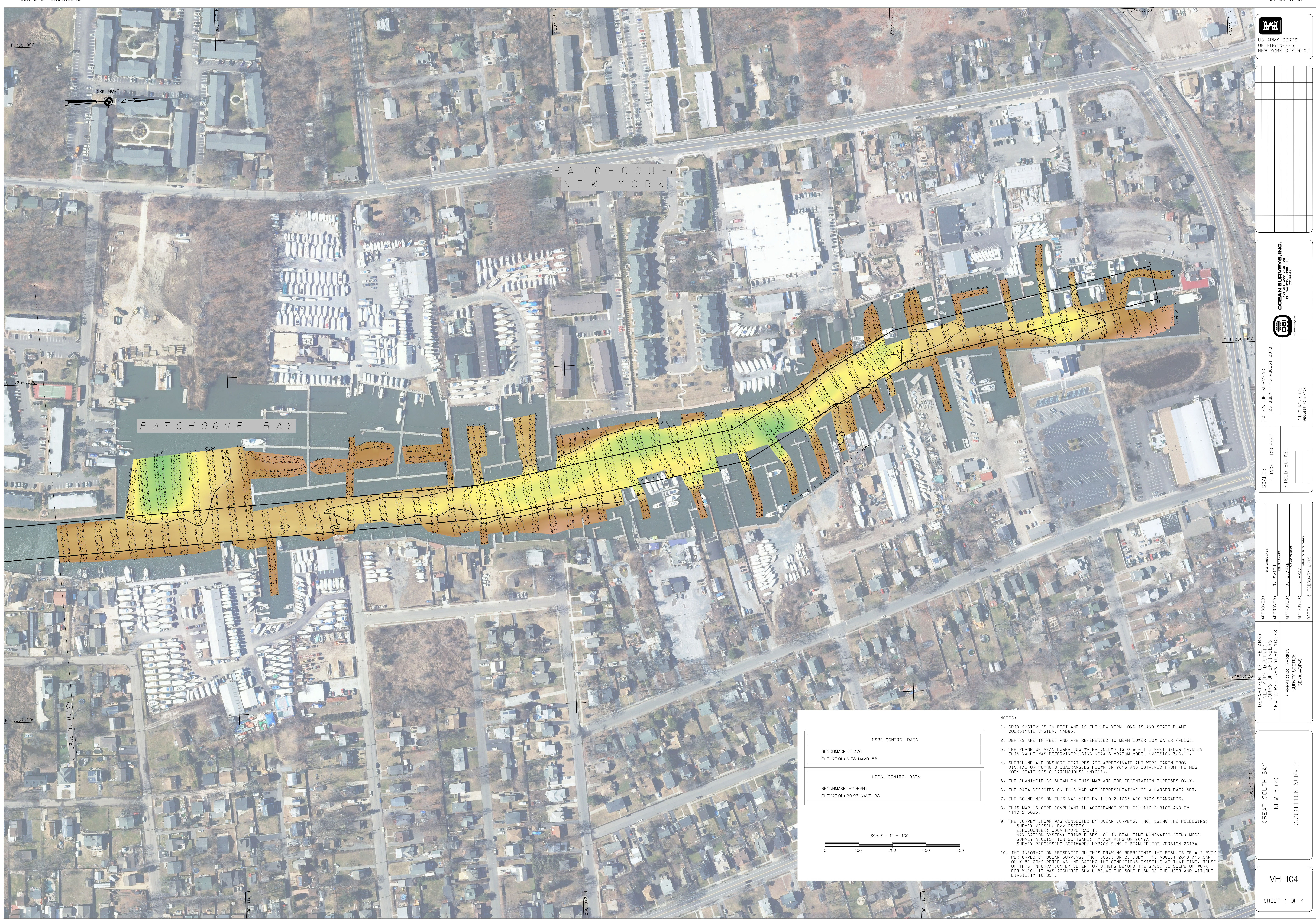
**NOTES:**

1. GRID SYSTEM IS IN FEET AND IS THE NEW YORK LONG ISLAND STATE PLANE COORDINATE SYSTEM, NAD83.
2. DEPTHS ARE IN FEET AND ARE REFERENCED TO MEAN LOWER LOW WATER (MLLW).
3. THE PLANE OF MEAN LOWER LOW WATER (MLLW) IS 0.6 - 1.2 FEET BELOW NAVD 88. THIS VALUE WAS DETERMINED USING NOAA'S VDATUM MODEL (VERSION 3.6.11).
4. SHORELINE AND ONSHORE FEATURES ARE APPROXIMATE AND WERE TAKEN FROM DIGITAL ORTHOPHOTO QUADRANGLES FLOWN IN 2016 AND OBTAINED FROM THE NEW YORK STATE GIS CLEARINGHOUSE (NYGIS).
5. THE PLANIMETRICS SHOWN ON THIS MAP ARE FOR ORIENTATION PURPOSES ONLY.
6. THE DATA DEPICTED ON THIS MAP ARE REPRESENTATIVE OF A LARGER DATA SET.
7. THE SOUNDINGS ON THIS MAP MEET EM 1110-2-1003 ACCURACY STANDARDS.
8. THIS MAP IS CEPD COMPLIANT IN ACCORDANCE WITH ER 1110-2-8160 AND EM 1110-2-6056.
9. THE SURVEY SHOWN WAS CONDUCTED BY OCEAN SURVEYS, INC. USING THE FOLLOWING:  
SURVEY VESSEL: R/V OSPREY  
ECHOSOUNDER: ODOM HYDROTRAC II  
NAVIGATION SYSTEM: TRIMBLE SPS-461 IN REAL TIME KINEMATIC (RTK) MODE  
SURVEY ACQUISITION SOFTWARE: HYPACK VERSION 2017A  
SURVEY PROCESSING SOFTWARE: HYPACK SINGLE BEAM EDITOR VERSION 2017A
10. THE INFORMATION PRESENTED ON THIS DRAWING REPRESENTS THE RESULTS OF A SURVEY PERFORMED BY OCEAN SURVEYS, INC. (OSI) ON 23 JULY - 16 AUGUST 2018 AND CAN ONLY BE CONSIDERED AS INDICATING THE CONDITIONS EXISTING AT THAT TIME. REUSE OF THIS INFORMATION BY CLIENT OR OTHERS BEYOND THE SPECIFIC SCOPE OF WORK FOR WHICH IT WAS ACQUIRED SHALL BE AT THE SOLE RISK OF THE USER AND WITHOUT LIABILITY TO OSI.

**NSRS CONTROL DATA**  
BENCHMARK: F 376  
ELEVATION: 6.78' NAVD 88

**LOCAL CONTROL DATA**  
BENCHMARK: HYDRANT  
ELEVATION: 20.93' NAVD 88

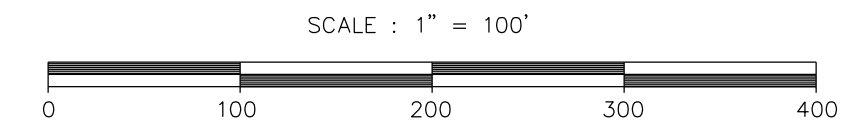




PATCHOGUE,  
NEW YORK

PATCHOGUE BAY

NRSR CONTROL DATA	
BENCHMARK: F 376	ELEVATION: 6.78' NAVD 88
LOCAL CONTROL DATA	
BENCHMARK: HYDRANT	ELEVATION: 20.93' NAVD 88



- NOTES:
1. GRID SYSTEM IS IN FEET AND IS THE NEW YORK LONG ISLAND STATE PLANE COORDINATE SYSTEM, NAD83.
  2. DEPTHS ARE IN FEET AND ARE REFERENCED TO MEAN LOWER LOW WATER (MLLW).
  3. THE PLANE OF MEAN LOWER LOW WATER (MLLW) IS 0.6 - 1.2 FEET BELOW NAVD 88. THIS VALUE WAS DETERMINED USING NOAA'S DATUM MODEL (VERSION 3.6.11).
  4. SHORELINE AND ONSHORE FEATURES ARE APPROXIMATE AND WERE TAKEN FROM DIGITAL ORTHOPHO QUADRANGLES FLOWN IN 2016 AND OBTAINED FROM THE NEW YORK STATE GIS CLEARINGHOUSE (NYGIS).
  5. THE PLANIMETRICS SHOWN ON THIS MAP ARE FOR ORIENTATION PURPOSES ONLY.
  6. THE DATA DEPICTED ON THIS MAP ARE REPRESENTATIVE OF A LARGER DATA SET.
  7. THE SOUNDINGS ON THIS MAP MEET EM 1110-2-1003 ACCURACY STANDARDS.
  8. THIS MAP IS CEPD COMPLIANT IN ACCORDANCE WITH ER 1110-2-8160 AND EM 1110-2-4056.
  9. THE SURVEY SHOWN WAS CONDUCTED BY OCEAN SURVEYS, INC. USING THE FOLLOWING:  
SURVEY VESSEL: R/V OSPREY  
ECHOSOUNDER: ODOM HYDROTRAC II  
NAVIGATION SYSTEM: TRIMBLE GPS-461 IN REAL TIME KINEMATIC (RTK) MODE  
SURVEY ACQUISITION SOFTWARE: HYPACK VERSION 2017A  
SURVEY PROCESSING SOFTWARE: HYPACK SINGLE BEAM EDITOR VERSION 2017A
  10. THE INFORMATION PRESENTED ON THIS DRAWING REPRESENTS THE RESULTS OF A SURVEY PERFORMED BY OCEAN SURVEYS, INC. (OSI) ON 23 JULY - 16 AUGUST 2018 AND CAN ONLY BE CONSIDERED AS INDICATING THE CONDITIONS EXISTING AT THAT TIME. REUSE OF THIS INFORMATION BY CLIENT OR OTHERS BEYOND THE SPECIFIC SCOPE OF WORK FOR WHICH IT WAS ACQUIRED SHALL BE AT THE SOLE RISK OF THE USER AND WITHOUT LIABILITY TO OSI.

CORPS OF ENGINEERS
U. S. ARMY

OCEAN SURVEYS, INC.  
 AN AT&T COMPANY  
 600 EASTERN AVENUE  
 NEW YORK, NY 10022

DEPARTMENT OF THE ARMY CORPS OF ENGINEERS NEW YORK, NEW YORK 10278	FIELD OPERATOR: R. SMITH PROJECT MANAGER: D. CLARKE SURVEY ENGINEER: J. MARZ DATE: 5 FEBRUARY 2019	OPERATIONS DIVISION SURVEY SECTION CEWAN-OPS	GREAT SOUTH BAY NEW YORK CONDITION SURVEY
APPROVED: _____ DATE: _____	APPROVED: _____ DATE: _____	APPROVED: _____ DATE: _____	APPROVED: _____ DATE: _____

DATES OF SURVEY: 23 JULY - 16 AUGUST 2018	SCALE: 1" = 100 FEET	FIELD BOOKS:	FILE NO.: 101 REVISION NO.: 4724
--	-------------------------	--------------	-------------------------------------

DEPARTMENT OF THE ARMY CORPS OF ENGINEERS NEW YORK, NEW YORK 10278	OPERATIONS DIVISION SURVEY SECTION CEWAN-OPS	GREAT SOUTH BAY NEW YORK CONDITION SURVEY	VH-104 SHEET 4 OF 4
--	--	---	------------------------

APPROVED: _____ DATE: _____	APPROVED: _____ DATE: _____	APPROVED: _____ DATE: _____	APPROVED: _____ DATE: _____
--------------------------------	--------------------------------	--------------------------------	--------------------------------

DATES OF SURVEY: 23 JULY - 16 AUGUST 2018	SCALE: 1" = 100 FEET	FIELD BOOKS:	FILE NO.: 101 REVISION NO.: 4724
--	-------------------------	--------------	-------------------------------------

DEPARTMENT OF THE ARMY CORPS OF ENGINEERS NEW YORK, NEW YORK 10278	OPERATIONS DIVISION SURVEY SECTION CEWAN-OPS	GREAT SOUTH BAY NEW YORK CONDITION SURVEY	VH-104 SHEET 4 OF 4
--	--	---	------------------------

APPROVED: _____ DATE: _____	APPROVED: _____ DATE: _____	APPROVED: _____ DATE: _____	APPROVED: _____ DATE: _____
--------------------------------	--------------------------------	--------------------------------	--------------------------------

DATES OF SURVEY: 23 JULY - 16 AUGUST 2018	SCALE: 1" = 100 FEET	FIELD BOOKS:	FILE NO.: 101 REVISION NO.: 4724
--	-------------------------	--------------	-------------------------------------

DEPARTMENT OF THE ARMY CORPS OF ENGINEERS NEW YORK, NEW YORK 10278	OPERATIONS DIVISION SURVEY SECTION CEWAN-OPS	GREAT SOUTH BAY NEW YORK CONDITION SURVEY	VH-104 SHEET 4 OF 4
--	--	---	------------------------

APPROVED: _____ DATE: _____	APPROVED: _____ DATE: _____	APPROVED: _____ DATE: _____	APPROVED: _____ DATE: _____
--------------------------------	--------------------------------	--------------------------------	--------------------------------

FILE NO.: 101  
REG NO.: 4724